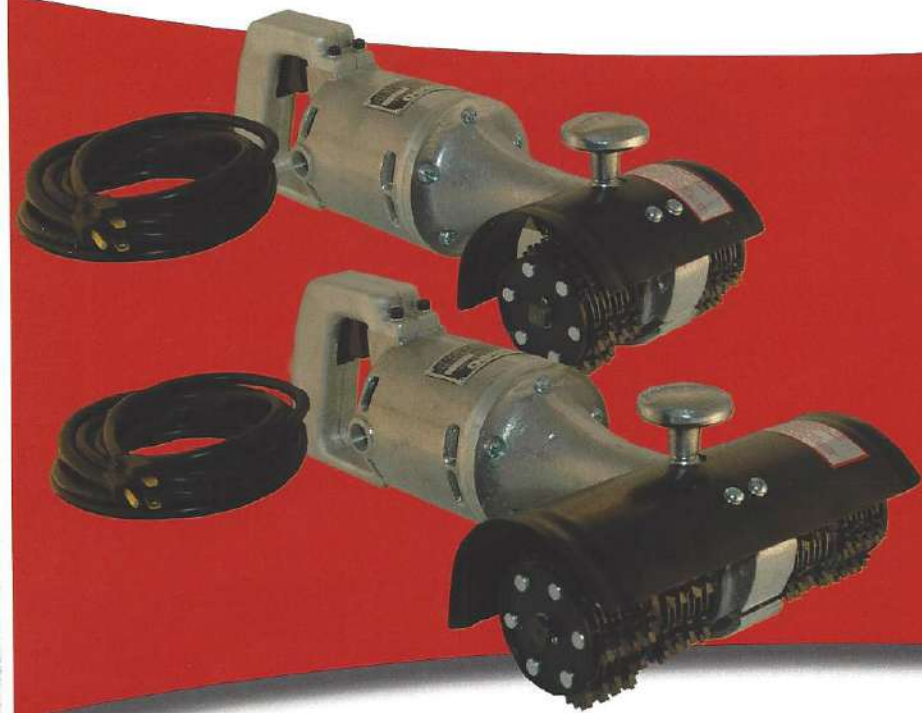


AURAND

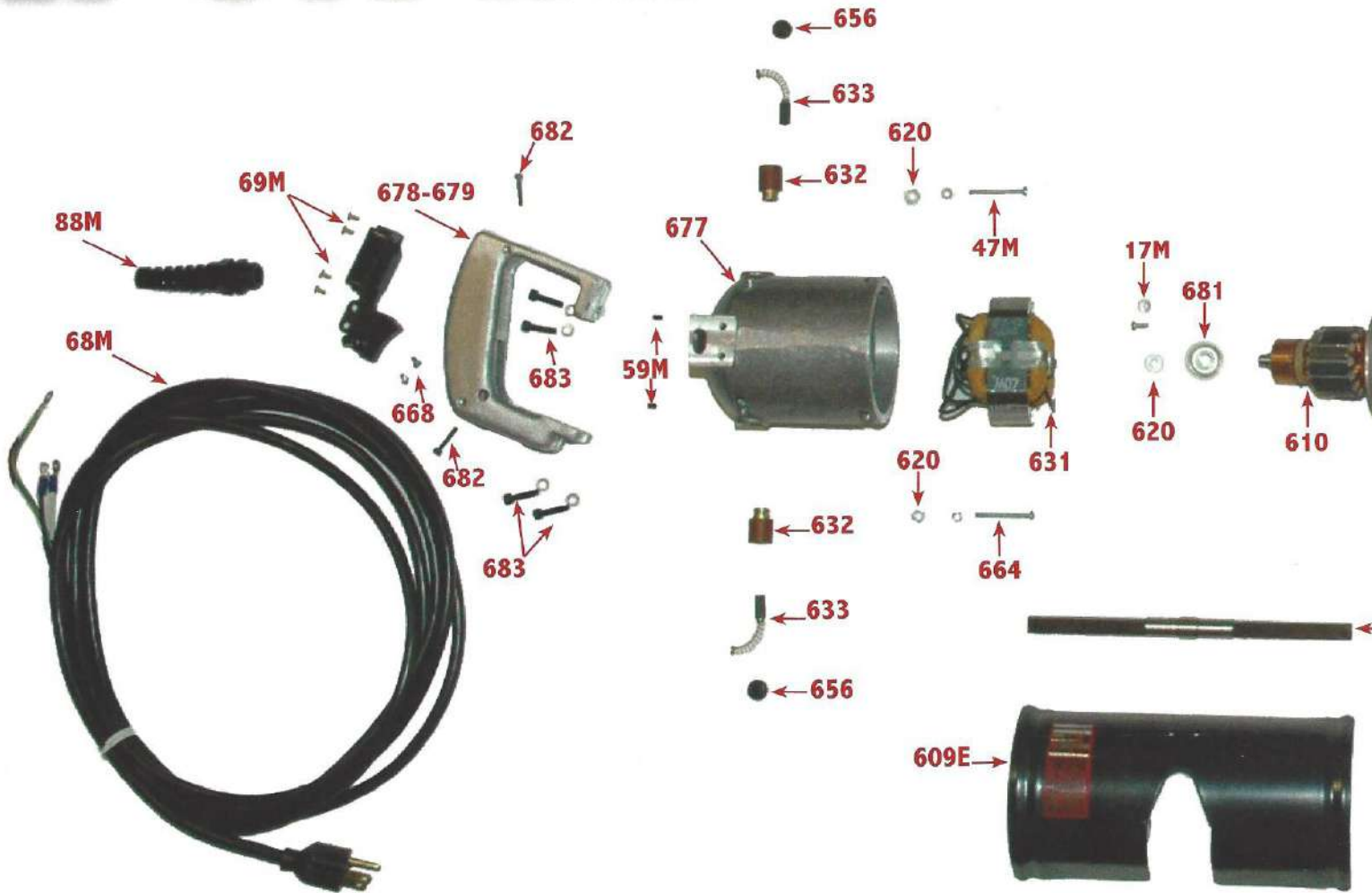


K7-1, K7-2
K7-1E, K7-2E

Parts List & Operating Instructions

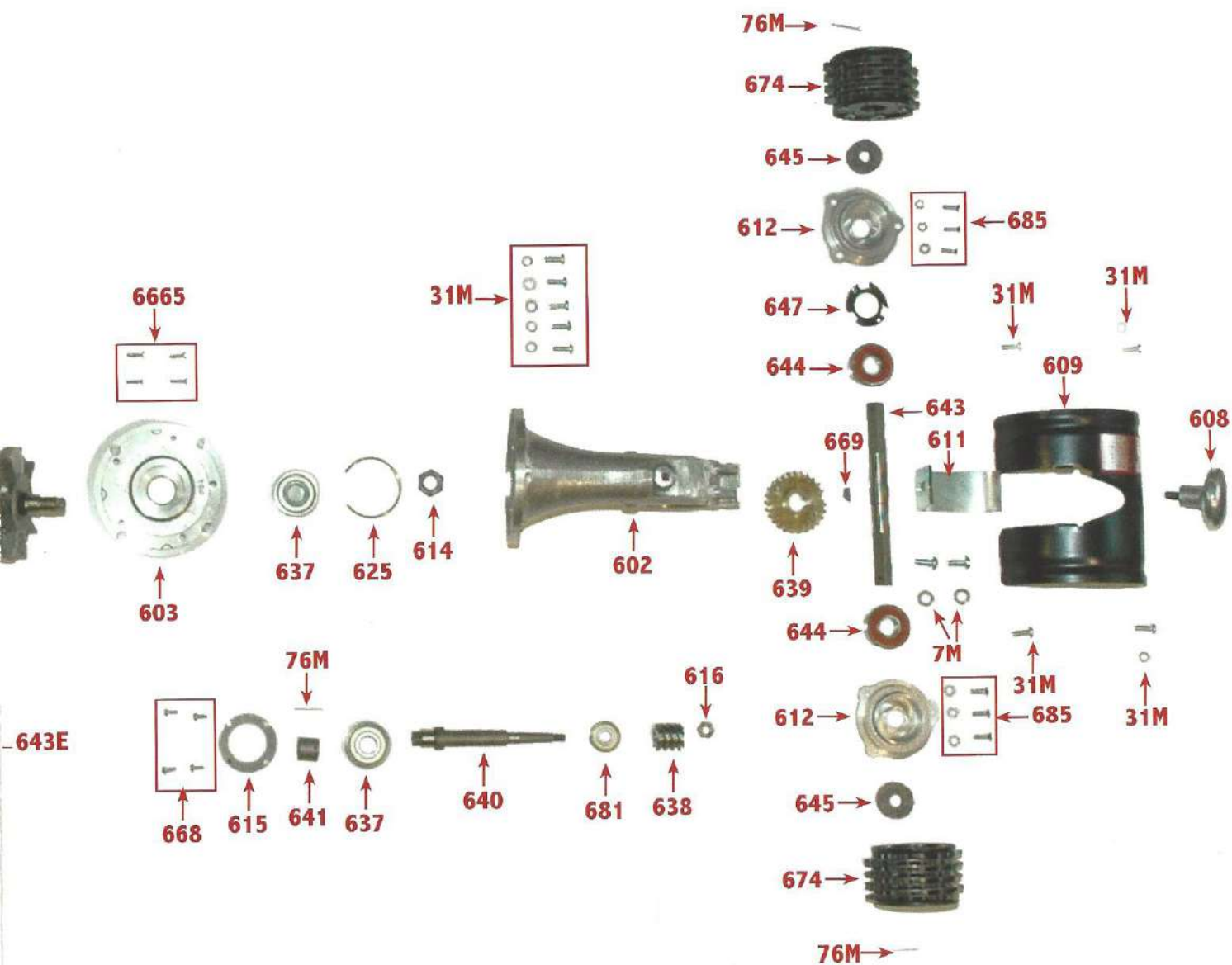
Aurand has manufactured exclusively in the USA since 1937.

AURAND



PART NUMBERS

602	Gear Housing	620	Washer (3)
603	Center Plate	625	Bearing Ring
608	Handle	631	Field (115V)
609	Guard	2631	Field (230V)
609E	Guard (K7-1E) Model	632	Brush Holder (2)
610	Armature (115V)	633	Brush & Spring (2)
2610	Armature (230V)	637	Bearing (2)
611	Depth Shoe	638	Worm
612	Side Plate (2)	639	Worm Wheel
614	Armature Nut	640	Worm Shaft
615	BRG Retainer Plate	641	Coupling
616	Worm Nut	643	Spindle



643E Spindle (K7-1E Model)

644 Bearing Spindle (2)

645 Cutter Bundle felt (2)

647 Spring Washer

656 Field Screw (2)

665 Center PL. Screw (4)

668 Ret. PL. Screw (6)

669 Woodruff Key

674 Cutter Bundle Set

674E Cutter Bundle Set (K7-1E Model)

677 Motor Housing

678 Handle

679 Handle

681 Bearing (2)

682 Cover Screw (2)

683 Handle Screw (4)

685 Side PL. Screw (6)

7M Depth Shoe Screw (2)

17M Armature Screw

31M Screw & Washer (9)

59M Holder Set Screw (2)

69M Cable

76M Cotter Pin (3)

88M Cable Protector

BEFORE OPERATING:

The Aurand cleaning tool (electric model) is equipped with a universal type motor which is equally efficient on either direct or alternating current. It is furnished for use with either 115 or 230 voltage, **Both voltages are NOT possible on one machine.** The voltage for your machines is stamped on the name plate.

The K tool has been thoroughly tested and shipped complete, but **DO NOT** attempt to operate without reading the following instructions.

OPERATING INSTRUCTIONS:

1. Wear safety glasses and hearing protection.
2. Grasp both handles and raise front of tool from surface.
3. Squeeze trigger and allow cutters to come up to speed before applying to surface.
4. Using both hands, guide tool in a forward and backward motion to assure complete coverage. Let weight of tool do the work. Never apply pressure as this will slow down motor speed and cause damage to motor, gears, and cutter bundles.

DEPTH ADJUSTMENT:

When adjustment is required to compensate for cutter wear:

1. Loosen SCREW (Ref 7M)
2. Move DEPTH SHOE (Ref 611) up or down as required. (Cutters should have play in them when touching work surface)
3. Tighten SCREW (Ref 7m)

CUTTER BUNDLE REPLACEMENT:

1. Install COTTER PIN & WASHER (Ref 76M) on both ends of SPINDLE (Ref 643 or 643E). Cutter tips must point in direction of rotation.
2. Slide CUTTER BUNDLE (Ref 674) and CUTTER BUNDLE FELT (Ref 645) from SPINDLE.
3. Slide new CUTTER BUNDLE FELT & CUTTER BUNDLES on SPINDLE, with large round hole facing side plate. CUTTER TIPS must point in direction of rotation.
4. Install COTTER PINS & WASHER on both ends of SPINDLE.

LUBRICATION:

Check grease (676) in Gear Housing after every 9 hours of operation . Remove KNOB (Ref 608). With tool sitting level add 676 GREASE through hole. Then replace SCREW & PLUG.



Aurand Manufacturing & Equipment Company

1210 Ellis St
Cincinnati OH 45223-1843

800-860-2872 or 513-541-7200
Fax 513-541-3065

www.aurand.net

We gladly accept:



AURAND