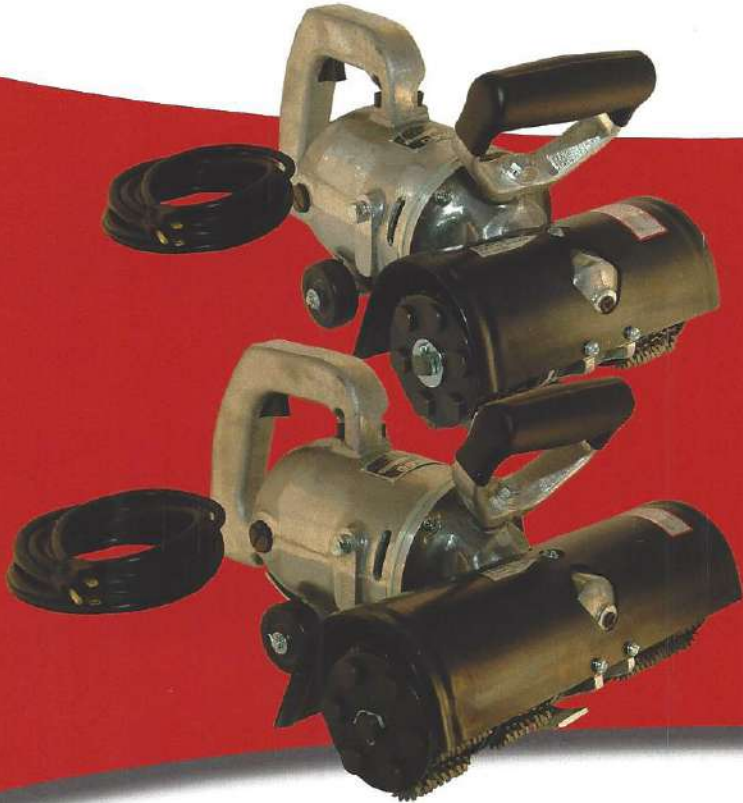


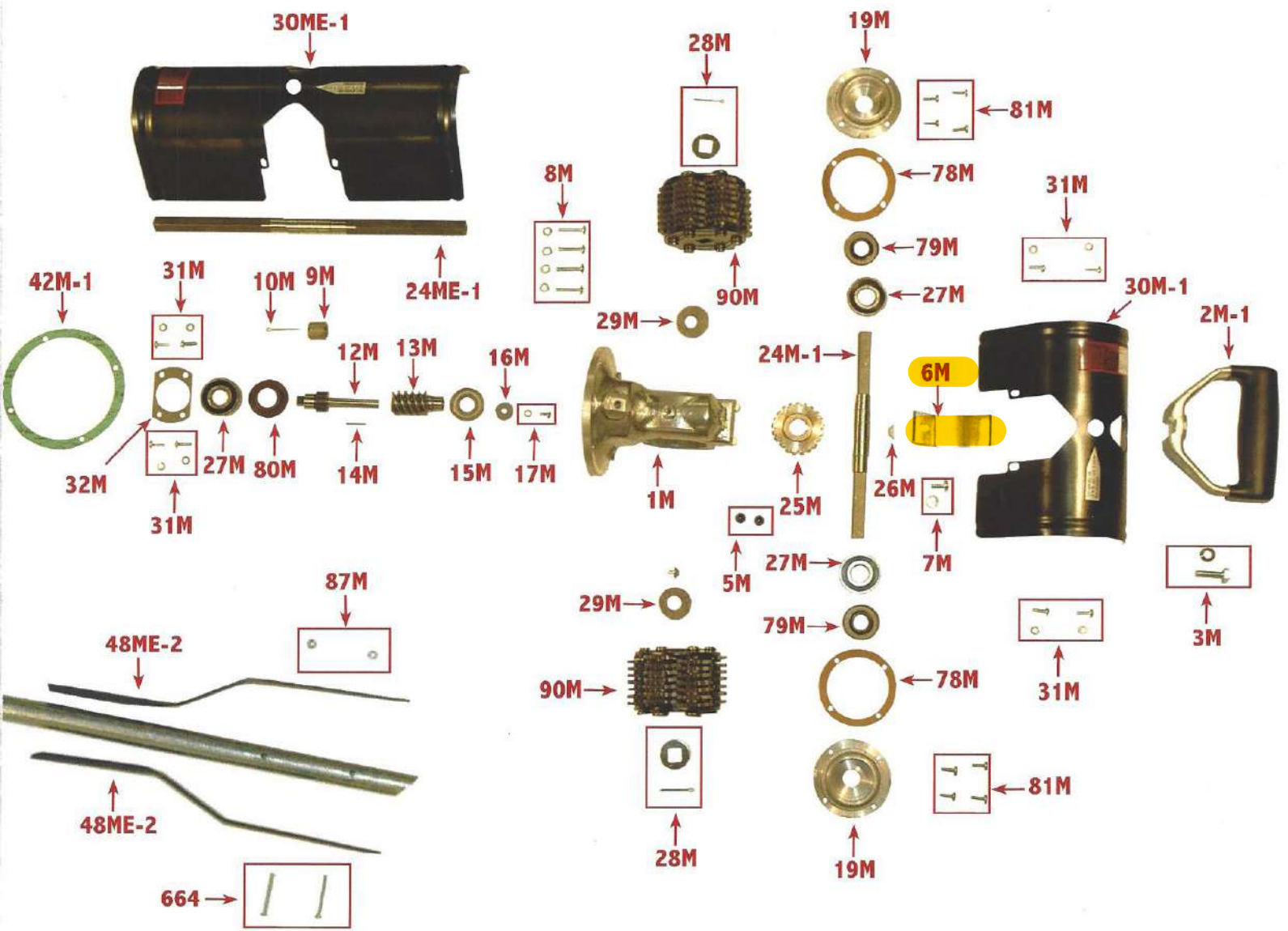
AURAND



M5-1, M5-2
M5-1E, M5-2E

Parts List & Operating Instructions

Aurand has manufactured exclusively in the USA since 1937.



- 46M Motor Field (115 Volt)
- 246M Motor Field (230 Volt)
- 47M Screw & Washer (2)
- 50M Armature Nut
- 53M Motor Armature (115 Volt)
- 253M Motor Armature (230 Volt)
- 57M Armature Nut
- 58M Brush Holder (2)
- 59M Holder Set Screw (2)
- 60M Holder Cap (2)
- 61M Motor Brush (2)
- 68M Lead Wire

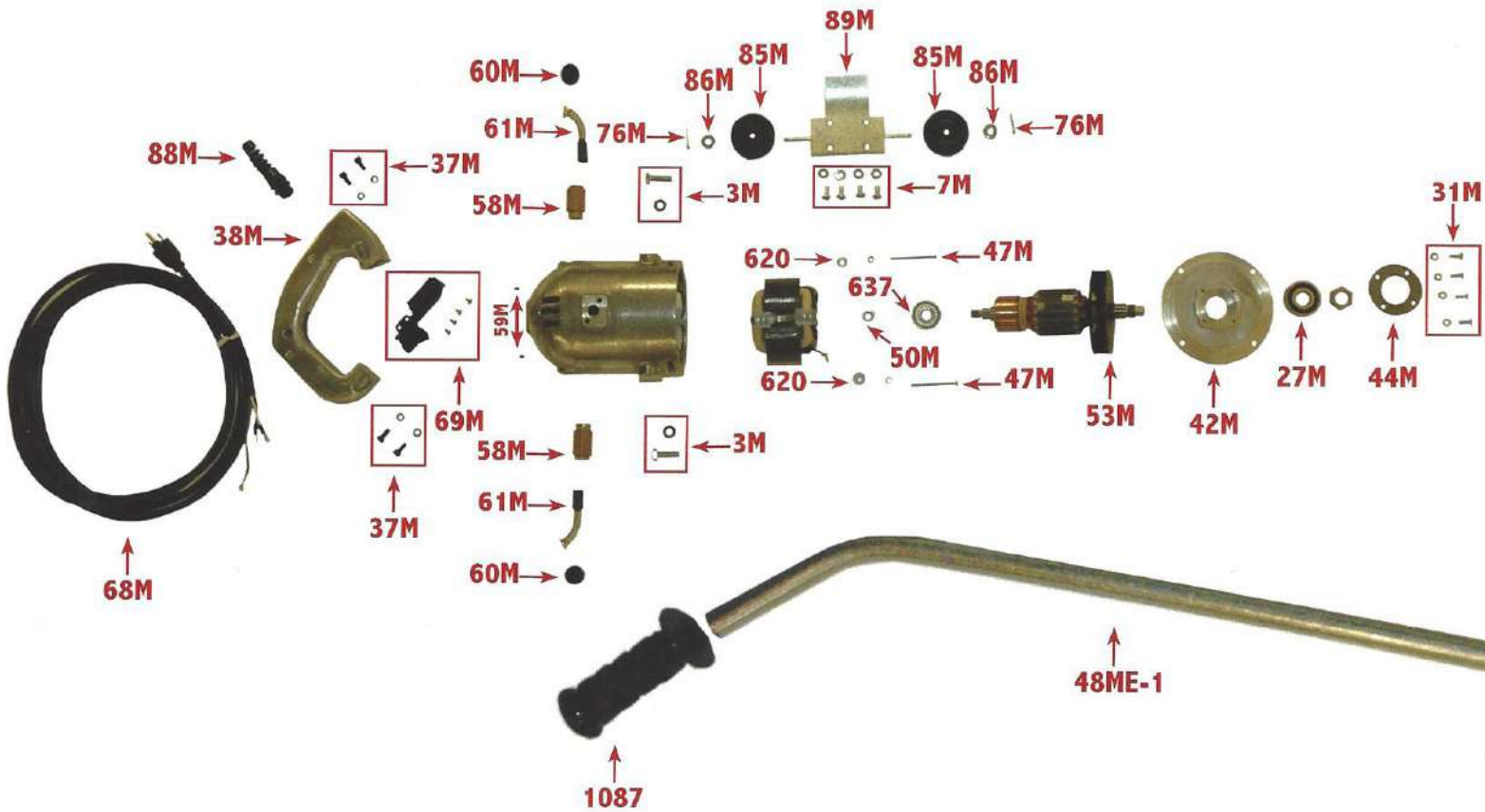
- 69M Switch
- 76M Cotter Pin (2)
- 78M Side Plate Gasket (2)
- 79M Shaft Seal (2)
- 80M Rear Bearing Gasket
- 81M Side Plate Seal Screw (8)
- 85M Wheel (2)
- 86M Washer (2)
- 88M Cable Protector
- 89M Bracket
- 90M Cutter Bundle Set
- 90ME Cutter Bundle Set (not shown)
- 1245 Oil 8 Oz. Tube

48ME Handle Assembly

(Standard on Models M5-1E & M5-2E
Optional on Models M5-1 & M5-2)

- 48ME-1 Handle
- 48ME-2 Support (2)
- 87M Stop Nut
- 664 Screw (2)
- 1087 Handle Grip

AURAND



PART NUMBERS

620	Washer (2)	12M	Worm Shaft	28M	Cutter Key & Washer (2)
637	Bearing	13M	Worm	29M	Cutter Bundle Felt (2)
1M	Front Housing	14M	Worm Key	30M-1	Guard 8"
2M-1	Spade Handle	15M	Bearing -Worm Shaft	30ME-1	Guard 12' (not shown)
3M	Handle Screw & Washer (3)	16M	Worm Shaft Washer	31M	Screw & washer (12)
4M	Screw	17M	Worm Shaft Screw & Washer	32M	Housing BRG. Plate
5M	Boss Plug (2)	19M	Side Plate (2)	35M	Motor Housing
6M	Depth Shoe	24M-1	Cutter Spindle 8"	37M	Handle Screw & Washer (4)
7M	Screw & Washer	24ME-1	Cutter Spindle 12"	38M	Rear Handle
8M	Front ASG Screw (4)	25M	Worm Wheel	42M	Center Plate
9M	coupling	26M	Woodruff Key	42M-1	Center Plate Gasket
10M	Cotter Pin	27M	Bearing (4)	44M	Bearing Plate

BEFORE OPERATING:

The Aurand cleaning tool (electric model) is equipped with a universal type motor which is equally efficient on either direct or alternating current. It is furnished for use with either 115 or 230 voltage, **Both voltages are NOT possible on one machine.** The voltage for your machines is stamped on the name plate.

The M tool has been thoroughly tested and shipped complete, but **DO NOT** attempt to operate without reading the following instructions.

OPERATING INSTRUCTIONS:

1. Wear safety glasses and hearing protection.
2. Grasp both handles and raise front of tool from surface.
3. Squeeze trigger and allow cutters to come up to speed before applying to surface.
4. Using both hands, guide tool in a forward and backward motion to assure complete coverage. Let weight of tool do the work. Never apply pressure as this will slow down motor speed and cause damage to motor, gears, and cutter bundles.

DEPTH ADJUSTMENT:

When adjustment is required to compensate for cutter wear:

1. Loosen SCREW (Ref 7M)
2. Move DEPTH SHOE (Ref 6M) up or down as required. (Cutters should have play in them when touching work surface)
3. Tighten SCREW (Ref 7M)

CUTTER BUNDLE REPLACEMENT:

1. Install COTTER PIN & WASHER (Ref 2M) on both ends of SPINDLE (Ref 24M-1 or 24ME-1). Cutter tips must point in direction of rotation.
2. Slide CUTTER BUNDLE (Ref 90M) and CUTTER BUNDLE FELT (Ref 29M) from SPINDLE.
3. Slide new CUTTER BUNDLE FELT & CUTTER BUNDLES on SPINDLE. CUTTER TIPS must point in direction of rotation.
4. Install COTTER PINS & WASHER on both ends of SPINDLE.

LUBRICATION:

Check oil (1245) in Gear Housing after every 9 hours of operation . Remove Oil Screw (Ref 4M). With tool sitting level add 1245 Gear Oil through hole. Then replace SCREW & PLUG.



Aurand Manufacturing & Equipment Company

1210 Ellis St
Cincinnati OH 45223-1843
aurand@fuse.net
800-860-2872 or 513-541-7200
Fax 513-541-3065

www.aurand.net

AURAND

We gladly accept:

